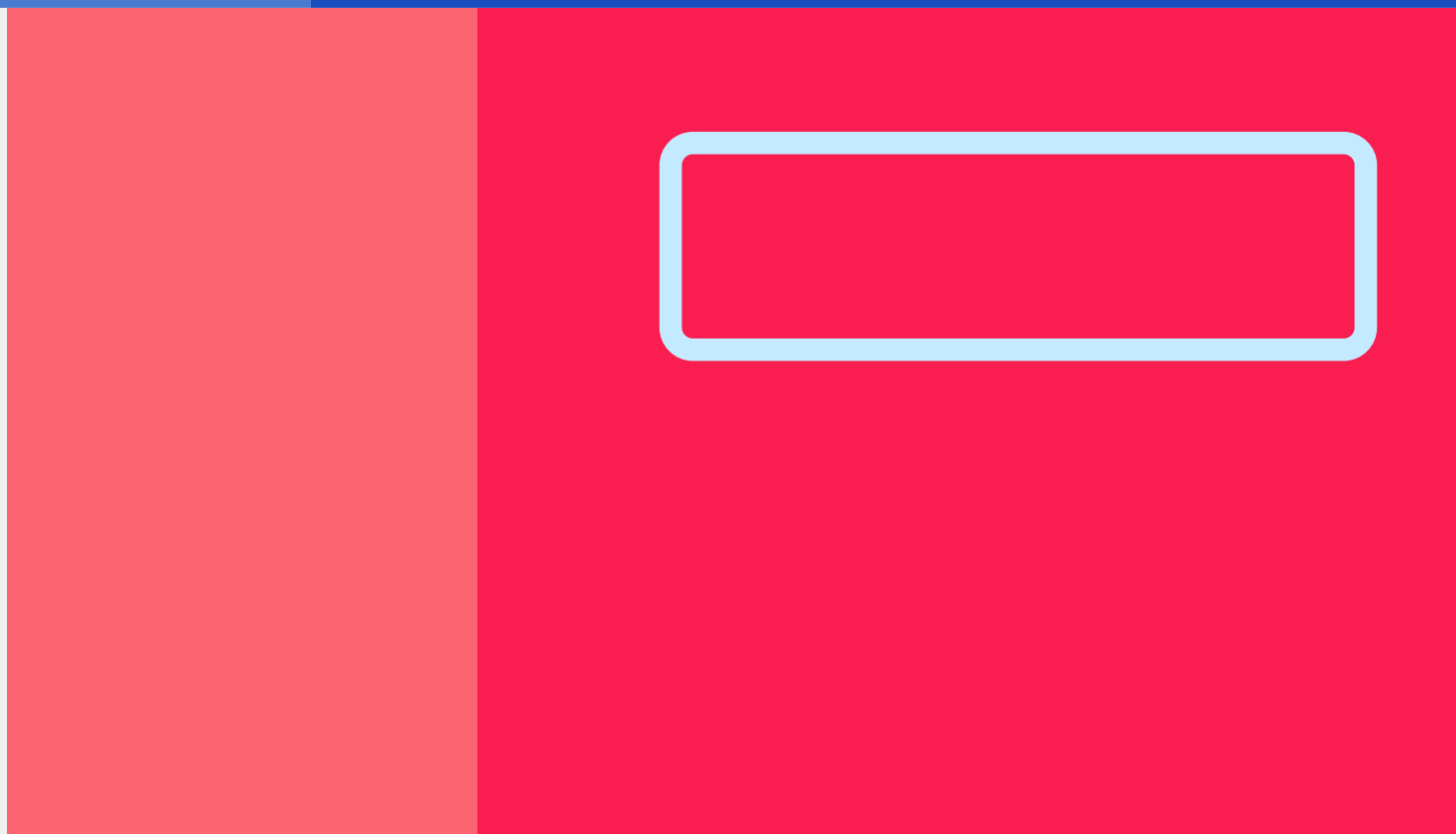


AN INFORMATIONAL GUIDE ON

VOTING

IN ARKANSAS

JULIAN STRAIN



WHAT TO DO

FIRST:



Register!

Before you can cast your vote, you must first register to vote in Arkansas.

You may already be registered to vote, you can check if you are eligible here:

<https://www.voterview.ar-nova.org/voterview>

How Do I Register?

Becoming a registered voter is simple. All you need to do is fill out and submit a Voter Registration Application

The applications can be aquired at many places such as public libraries and the DMV. You can also print your own from the two hyperlinks below.

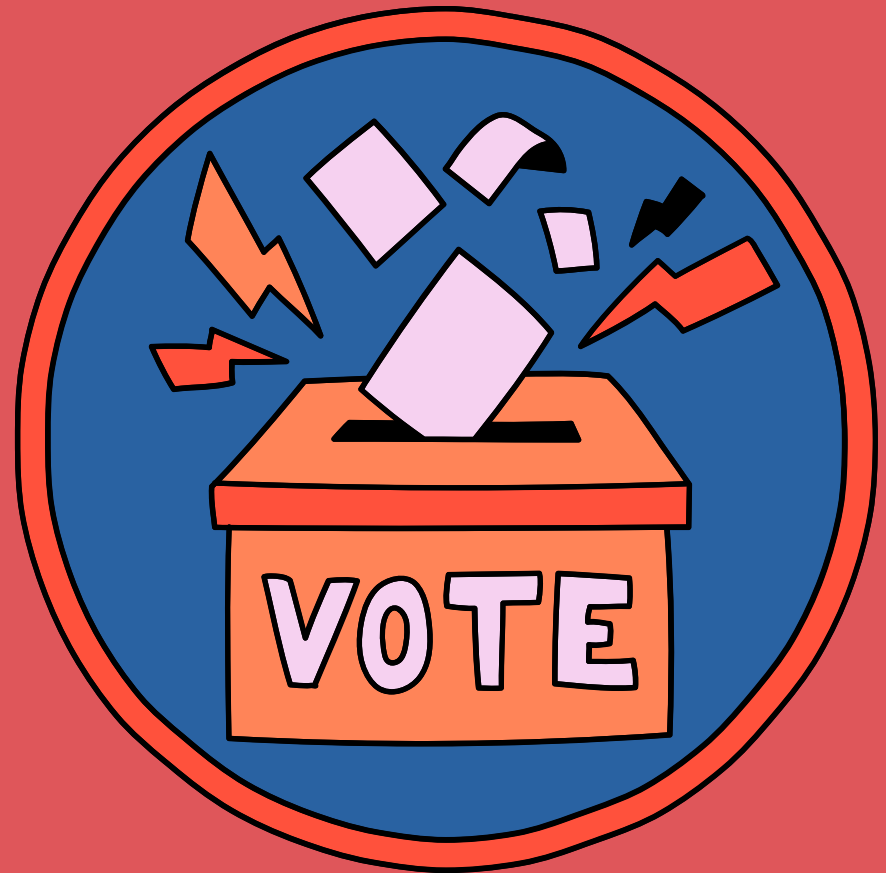
[Voter Registration Form \(English\)](#)

[Voter Registration Form \(Spanish\)](#)

Questions?

For more information on how to register to vote please visit the Arkansas Secretary of State website [here](#).

How To Vote!



What Do I need?

Arkansas requires you to bring a valid form of ID.

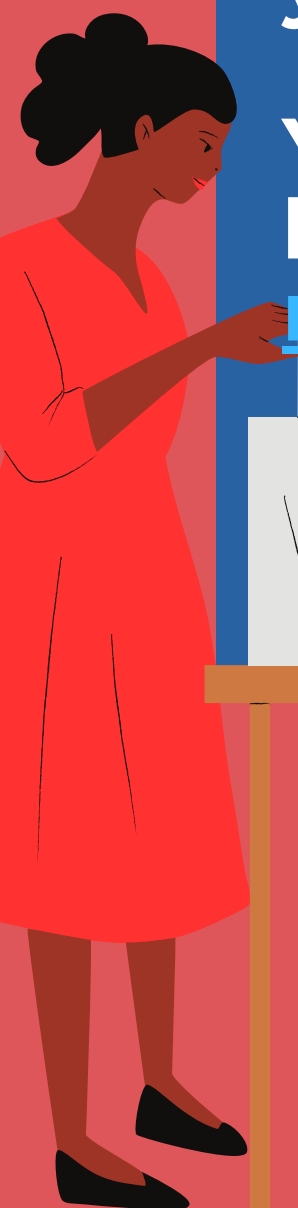
Here are some acceptable forms:

- Arkansas Drivers License
- Arkansas Photo ID
- U.S. Passport
- Military ID

Where Do I Go?


Depending where you are registered to vote will determine your polling location.

You can search your voting location here: <https://www.voterview.ar-nova.org/VoterView>





Election Day
November 5th 2024



MAKE A
DIFFERENCE,
VOTE!



VOTE NOW!

